

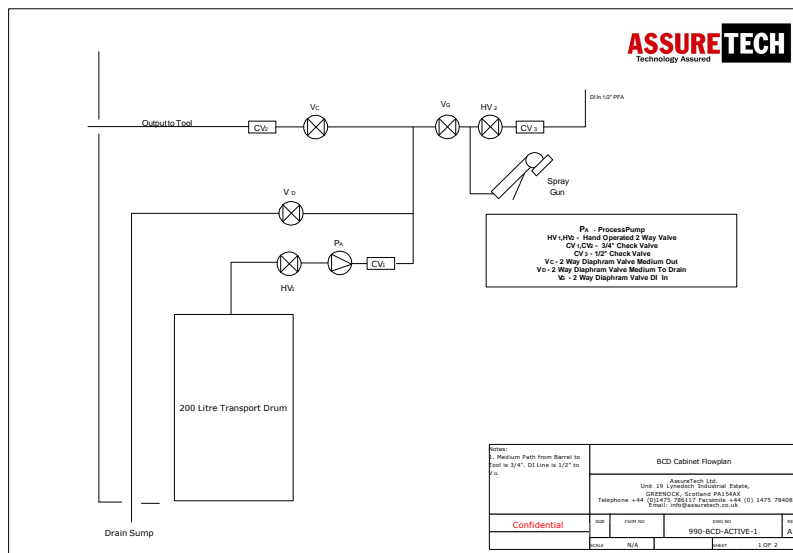
- Fully automatic chemical delivery system.
- PVC Housing (Dimensions 900mm wide x 1000mm deep x 1800mm high) with >150% burst barrel containment, coated rollers, adjustable feet. Optional securing chain for barrel. System for use with quick-connect head.
- Option for FM4910 compliant material.
- Safety system monitors exhaust out-of-limits, door open, internal leak, external leak, external Emergency Stop (EMS) and EMS button on front panel. Front mounted Power Switch.
- Signal Light Tower and audible alarm as standard.
- Optional Internal Lighting.
- DI Spray Gun (Non re-circulating) as standard. (Option for re-circulating type).
- Check valves to protect barrel & DI plant.
- Multiple Demand Signal Capability.
- Barrel Empty signaling. (Optional barrel contents monitoring system)*. System Ready signaling. Safety System signaling.
- DI Flush Pipes function button (Optional Key operation).
- Can be situated up to 100M distant from tool / Point Of Use (POU) box. Max 7M head.
- Remote Point of Use Valve Opening (Option for multiple tools).
- CE certification.
- Full Operator Training provided**.
- Consignment stock of spare parts.

Contact us now at

sales@assuretech.co.uk

* Barrel contents monitoring system increases equipment height by 70mm.
 ** Two Operators – 1 Day Each.

Equipment Weights & Sizes (Approx)			
Module	Dimensions (LxWxH in mm)	Weight	Description
1	1000 x 900 x 1800	150kg	BCD Unit
All containers / packages will have Impact Indicators			
The following equipment will be required to unload: Pallet Lifter(s)			



Internal Flowplan

BCD System Control Logic Matrix

System Status	Function Required	Control System Input Conditions				Control System Controlled Outputs				
		Safety System	System Ready	HV1	HV2	PA	VD	VC	VG	Signal to tool
Idle	None	Don't Care	Don't Care	Don't Care	Don't Care	Off	Closed	Closed	Closed	NOT active
Run	Chemical Demanded by Tool	Must Be Active	Must Be Ready	Must be open	Don't care	Must run (KS1 active)	Closed	Open	Closed	Active
Engineering	Rinse Tubes (Step 1)	Must Be Active	Must NOT Be Ready	Don't Care	Must Be Open	Off	Closed	Open	Open	Active
	Rinse Tubes (Step 2)	Must Be Active	Must NOT Be Ready	Don't Care	Must Be Open	Off	Open	Closed	Open	NOT active
	Empty Barrel	Must Be Active	Must Be Ready	Must be open	Closed	Run	Open	Closed	Closed	NOT active
Safety System Error	EMS Switch	Must Not Be Active	Don't Care	Don't Care	Don't Care	Off	Closed	Closed	Closed	Not Active
	Leak Sensor	Must Not Be Active	Don't Care	Don't Care	Don't Care	Off	Closed	Closed	Closed	Not Active
	Door	Must Not Be Active	Don't Care	Don't Care	Don't Care	Off	Closed	Closed	Closed	Not Active
	Exhaust	Must Not Be Active	Don't Care	Don't Care	Don't Care	Off	Closed	Closed	Closed	Not Active
	External	Must Not Be Active	Don't Care	Don't Care	Don't Care	Off	Closed	Closed	Closed	Not Active
	Spare	N/A	N/A	N/A	N/A	N/A	N/A	N/A	N/A	N/A

Control Logic